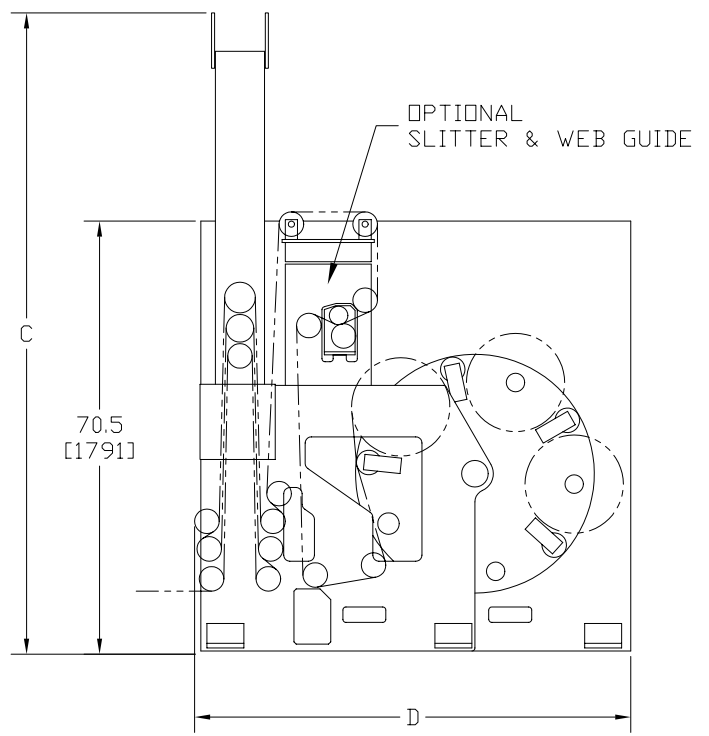
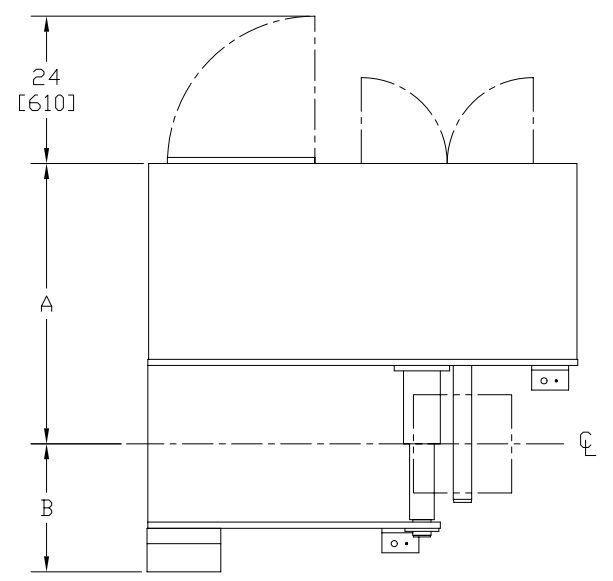


5-SPINDLE MODELS	WW IN [MM]	SPEED FPM [MPM]	ROLL WT LB [KG]	ROLL DIA IN [MM]	A IN [MM]	B IN [MM]	C IN [MM]	D IN [MM]
MR1616-05	16 [406]	500 [152]	250 [113]	16 [406]	46 [1168]	23.2 [589]	105 [2652]	71 [1803]
MR1616-08	16 [406]	800 [243]	250 [113]	16 [406]	46 [1168]	23.2 [589]	123 [3124]	82 [2083]
MR2016-05	20 [508]	500 [152]	250 [113]	16 [406]	48 [1219]	25.2 [640]	105 [2652]	71 [1803]
MR2016-08	20 [508]	800 [243]	250 [113]	16 [406]	48 [1219]	25.2 [640]	123 [3124]	82 [2083]
MR2416-05	24 [609]	500 [152]	250 [113]	16 [406]	50 [1270]	27.2 [691]	105 [2652]	71 [1803]
MR2416-08	24 [609]	800 [243]	250 [113]	16 [406]	50 [1270]	27.2 [691]	123 [3124]	82 [2083]

3-SPINDLE MODELS	WW IN [MM]	SPEED FPM [MPM]	ROLL WT LB [KG]	ROLL DIA IN [MM]	A IN [MM]	B IN [MM]	C IN [MM]	D IN [MM]
MR1624-05	16 [406]	500 [152]	250 [113]	24 [609]	46 [1168]	23.2 [589]	105 [2652]	71 [1803]
MR1624-08	16 [406]	800 [243]	250 [113]	24 [609]	46 [1168]	23.2 [589]	123 [3124]	82 [2083]
MR2024-05	20 [508]	500 [152]	250 [113]	24 [609]	48 [1219]	25.2 [640]	105 [2652]	71 [1803]
MR2024-08	20 [508]	800 [243]	250 [113]	24 [609]	48 [1219]	25.2 [640]	123 [3124]	82 [2083]
MR2424-05	24 [609]	500 [152]	250 [113]	24 [609]	50 [1270]	27.2 [691]	105 [2652]	71 [1803]
MR2424-08	24 [609]	800 [243]	250 [113]	24 [609]	50 [1270]	27.2 [691]	123 [3124]	82 [2083]

MR1616-05, RIGHT HAND MACHINE SHOWN
 EST. SHIPPING WEIGHT: 7000 LBS [2948] KG
 EST. SHIPPING DIM: 90 X 144 X 84 IN [2286 X 3657 X 2133 MM]



PROPOSAL DRAWING; DIMENSIONS AND SPECIFICATIONS SUBJECT TO CHANGE WITHOUT NOTICE

EKTIE Keene Technology, Inc.
 14357 Commercial Pkwy.
 South Beloit, IL 61080
 (815)624-8989

TITLE: MR TURRET REWINDERS

DRAWN BY: CJP
 DWG. NUMBER: PR816
 DATE: 7/24/12
 PAGE: 1 OF 1

REVISIONS		
REV.	DESCRIPTION	DATE