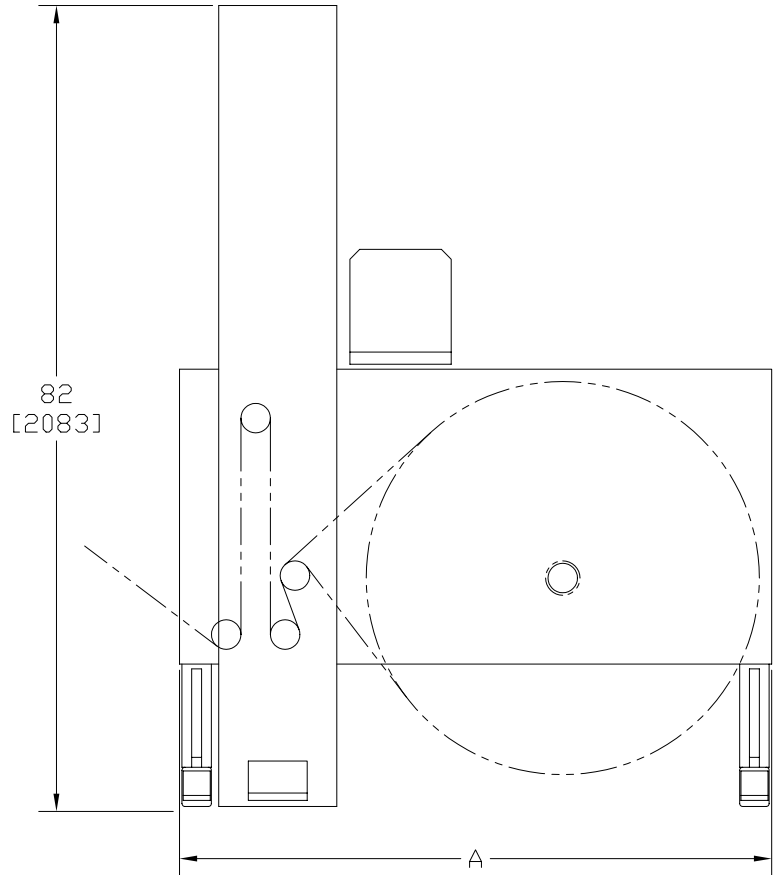
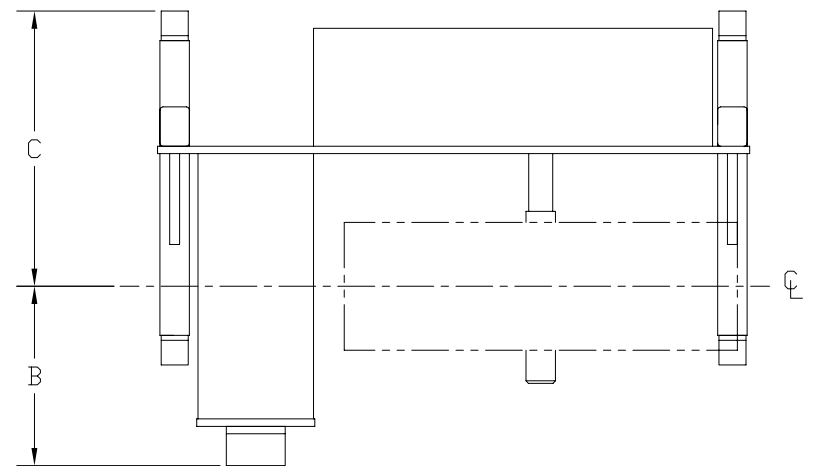


MODEL	WW IN [MM]	SPEED FPM [MPM]	ROLL DIA IN [MM]	ROLL WT LB [KG]	A IN [MM]	B IN [MM]	C IN [MM]
RWC1340-08	13 [330]	800 [243]	40 [1016]	800 [362]	60 [1530]	18 [464]	28 [711]
RWC1840-08	18 [457]	800 [243]	40 [1016]	800 [362]	60 [1530]	22 [552]	32 [800]
RWC2050-08	20 [508]	800 [243]	50 [1270]	1000 [453]	72 [1816]	22 [552]	32 [800]

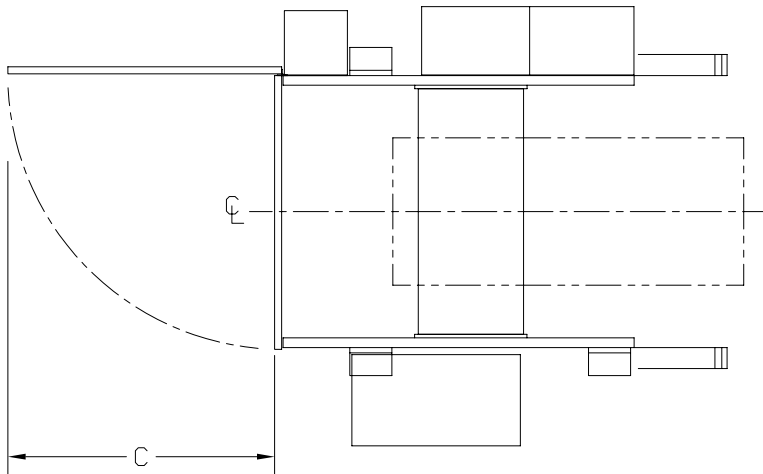


RIGHT HAND UNIT SHOWN

EST. SHIPPING WEIGHT: 2000 LBS
[907 KG]
EST. SHIPPING DIM: 84 X 84 X 66 IN
[2134 X 2134 X 1676 MM]

PROPOSAL DRAWING: DIMENSIONS AND SPECIFICATIONS SUBJECT TO CHANGE WITHOUT NOTICE

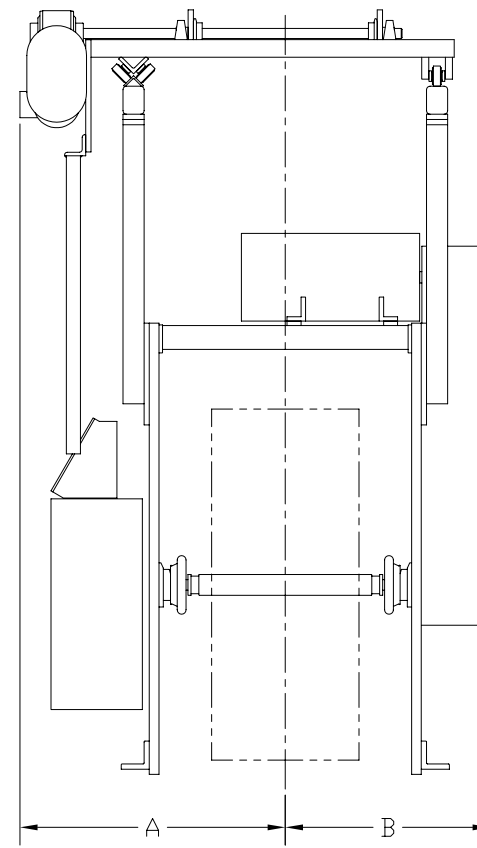
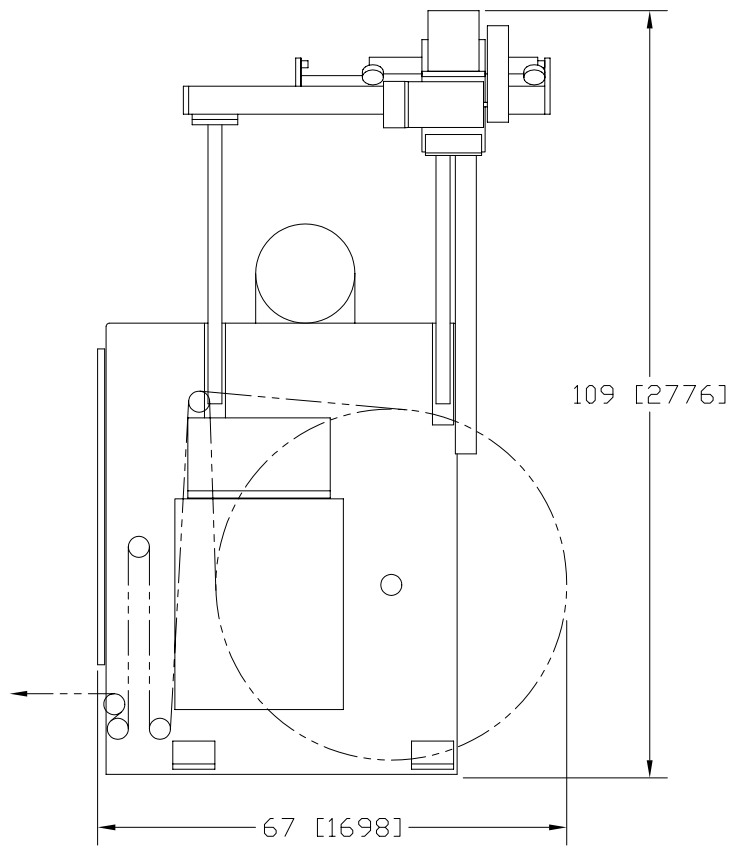
 Keene Technology, Inc. 14357 Commercial Pkwy. South Beloit, IL 61080 (815)624-8989	TITLE:	DRAWN BY:	DWG. NUMBER:	REVISIONS	
	RWC CANTILEVERED REWIND STANDS	CJP	PR831	REV.	DESCRIPTION
		DATE:	PAGE:		DATE
	9/10/12	1 OF 1			



MODEL	WW IN [MM]	SPEED FPM [MPM]	ROLL DIA IN [MM]	ROLL WT LB [KG]	A IN [MM]	B IN [MM]	C IN [MM]
RWS2150-10	21 [533]	1000 [304]	50 [1270]	1200 [544]	38 [960]	29 [742]	38 [965]
RWS2750-10	27 [685]	1000 [304]	50 [1270]	1800 [816]	41 [1037]	32 [818]	44 [1118]

RIGHT HAND UNIT SHOWN

EST. SHIPPING WEIGHT: 7000 LBS
[3175 KG]



PROPOSAL DRAWING: DIMENSIONS AND SPECIFICATIONS SUBJECT TO CHANGE WITHOUT NOTICE

EKTIE
Keene Technology, Inc.
14357 Commercial Pkwy.
South Beloit, IL 61080
(815)624-8989

TITLE:
RWS SHAFTED REWIND STANDS

DRAWN BY:
CJP
DATE:
9/4/12

DWG. NUMBER:
PR830
PAGE:
1 OF 1

REVISIONS		
REV.	DESCRIPTION	DATE